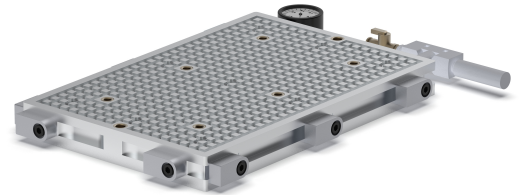


Vacuum plate with high holding force is made from cast aluminium. Due to the increased number of vacuum points the vacuum plate can be used universally. The integrated threaded grid holes and the workpiece stops provide great flexibility in positioning the workpiece to be machined. For milling of breakthroughs is the use of adapter mats necessary. Included are venturi vacuum generator and a pressure gauge for vacuum monitoring.



Scope of delivery

- 1 Vacuum plate
- 1 Venturi vacuum generator
- 1 Pressure gauge
- 4 Stops
- 2 Stop bars
- 1 Sealing cord
- 1 PVC adapter mat

Strong Points

- + High inherent stability
- + More vacuum points, more holding power
- + Vacuum generator and pressure gauge included

Web

See below for more details and accessories

<https://produkte.spreitzer.de/en/clamping/vacuum-clamping-technology/vacuum-plates/vacuum-plate-spvpl-pro-642>.

Material

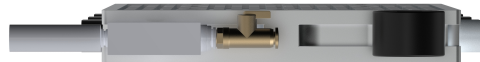
- High strength aluminum

Finish

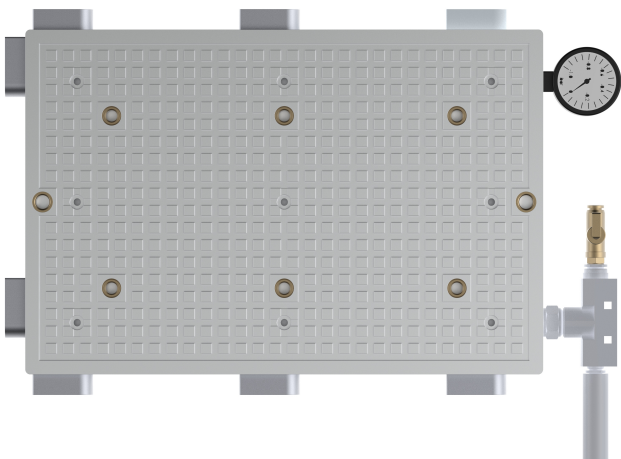
- Grinded functional surfaces: Parallelism 0,007/100 mm



Vacuum Plate SPVPL Pro No. B900501280-GS Front View



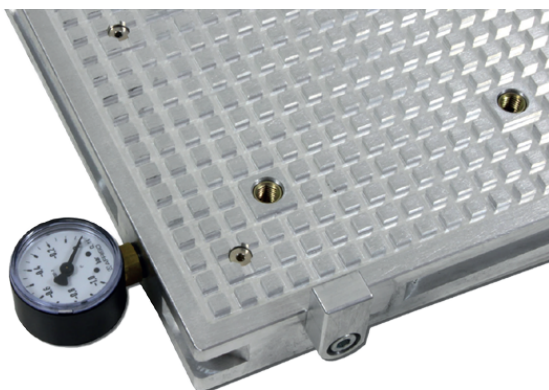
Vacuum plate SPVPL Pro No. B900501280-GS from the right



Vacuum plate SPVPL Pro No. B900501280-GS from above



Vacuum plate SPVPL Pro with accessories



Vacuum plate SPVPL Pro with manometer

Finish	Order Number	Dimensions [mm]	Clamping surface [mm]	Suction points	Weight [kg]
SPVPL 2020 Pro GS	B900501279-GS	200x200x30	200x200	2	4,5
SPVPL 3020 Pro GS	B900501280-GS	300x300x30	300x300	6	5
SPVPL 3030 Pro GS	B900501281-GS	300x300x30	300x300	16	7,5
SPVPL 4030 Pro GS	B900501211-GS	400x300x30	400x300	12	10
SPVPL 5040 Pro GS	B900501282-GS	500x400x30	500x400	16	16
SPVPL 6040 Pro GS	B900501208-GS	600x400x30	600x400	16	20
SPVPL 8060 Pro GS	B900501283-GS	800x600x30	800x600	30	40

Note: Your selected variants are marked in orange.