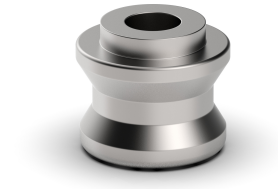


Chucking spigots for mechanical clamping units ZPS 10 and ZPS 20.



Scope of delivery

- 1 Chucking spigot

Note

- The chucking spigot ZPS SW has an additional auxiliary bore, which can be optionally used for simple installation.
- For sealing the clamping units optional protection spigots can be delivered.

Web

See below for more details and accessories

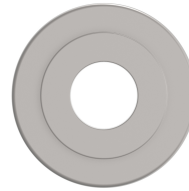
<https://produkte.spreitzer.de/en/clamping/zero-point-system/chucking-spigot-281>.

Material

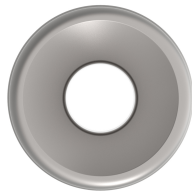
- Stainless steel, rust-resistant, hardened



Clamping spigot for mechanical clamping units ZPS 10 and ZPS 20
front view



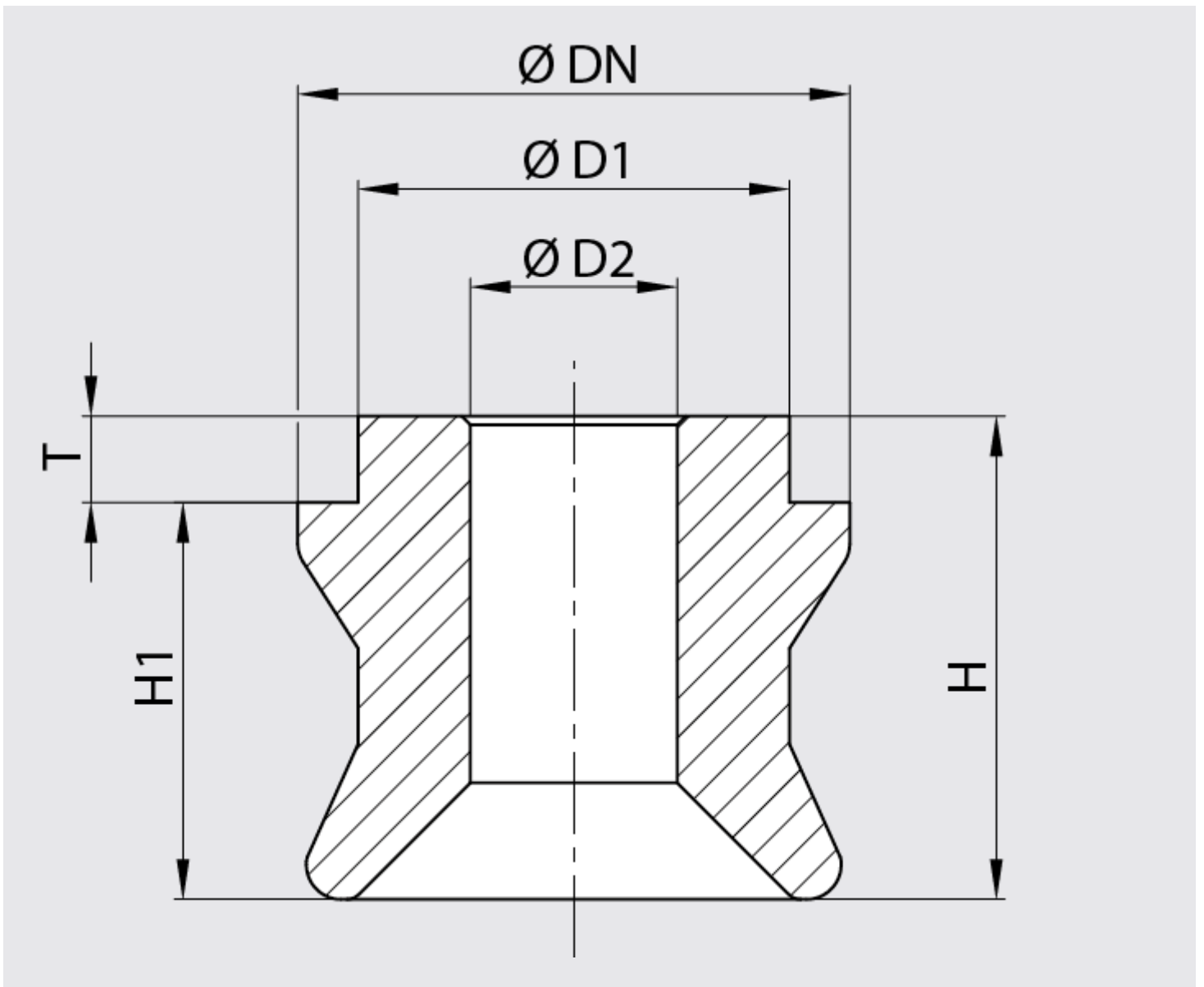
Clamping spigot for mechanical clamping units ZPS 10 and ZPS 20
from above



Clamping spigot for mechanical clamping units ZPS 10 and ZPS 20
from below

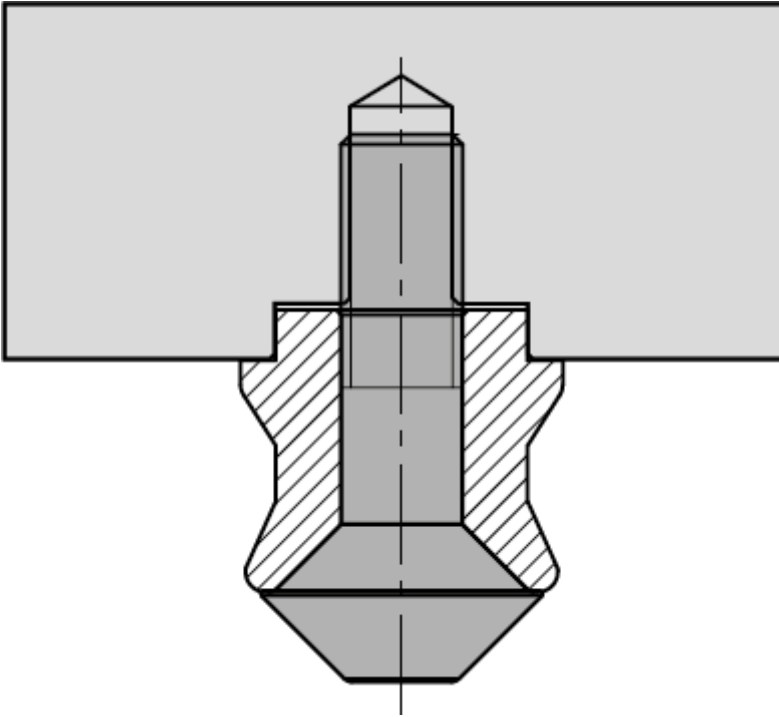
Finish	Order Number	Centering	Ø DN [mm]	Ø D1 [mm]	Ø D2 [mm]	H [mm]	H1 [mm]	T [mm]	Weight [kg]
ZPS 10 NP	B900501189	in two axes	22,0	15	8	19	16	3	0,03
ZPS 10 SW	B900501190	in one axis	22,0	15	8	19	16	3	0,03
ZPS 10 ZU	B900501191	without	21,8	15	8	19	16	3	0,03
ZPS 20 NP	B900501192	in two axes	32,0	25	12	28	23	5	0,11
ZPS 20 SW	B900501193	in one axis	32,0	25	12	28	23	5	0,11
ZPS 20 ZU	B900501194	without	32,0	25	12	28	23	5	0,11

Note: Your selected variants are marked in orange.

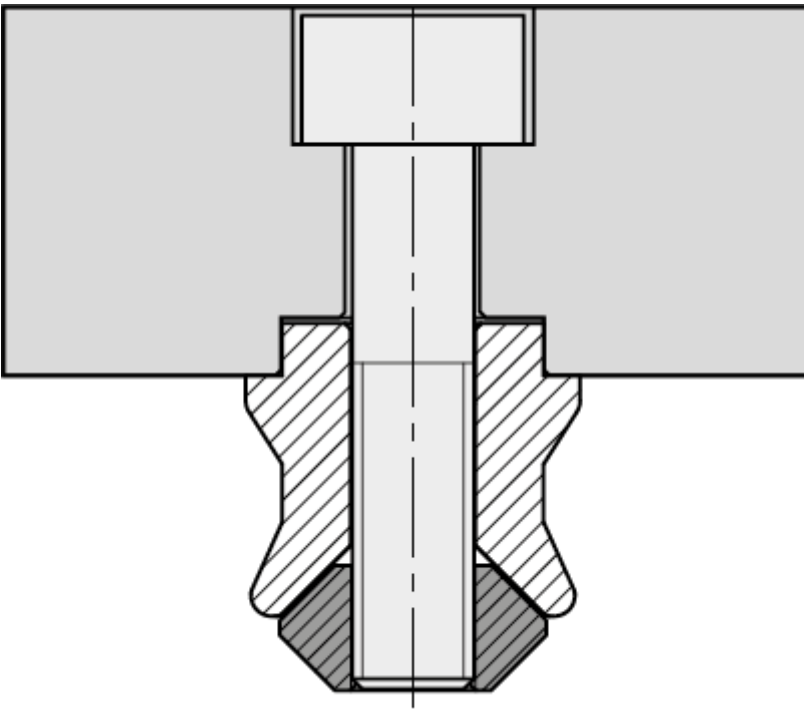


Clamping spigot dimensions for mechanical clamping units ZPS 10 and ZPS 20

Special features



Mounting with clamping spigot screw ZPS



Mounting with clamping spigot nut ZPS