

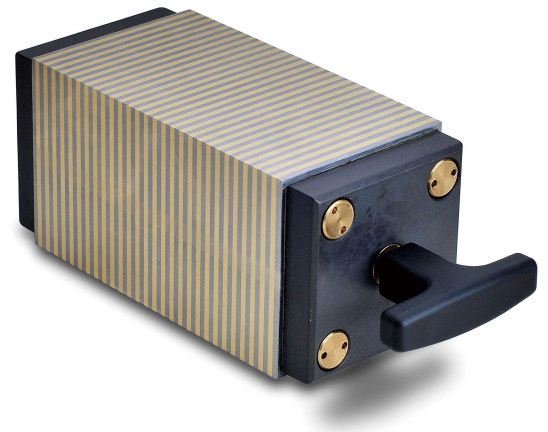
# Permanent magnetic clamping block SP-PMB



SP-PMB magnetic clamping blocks have four clamping sides and are switchable by the turning knob at the front side. They are universally usable for flat grinding, angular grinding, coordinate grinding, EDM, measuring, etc..

Due to the fine 2 + 2 mm pole pitch, thinnest pieces (from 0,5 mm) can be clamped safely; on the back there are 4 M5 threads for the attachment of stops.

Because of the low magnetic field height of only 2 mm and the complete hermetic seal, SPM clamping blocks are particularly suited for the use with wire- and sparkerosion, SPM clamping blocks in a rust-resistant chrome steel design are available too.



## Scope of delivery

- 1 SP-PMB Permanent magnetic clamping block
- Other sizes on request

## Note

- \*X = Rust-resistant version made of chrome steel – Caution when grinding, less holding force!

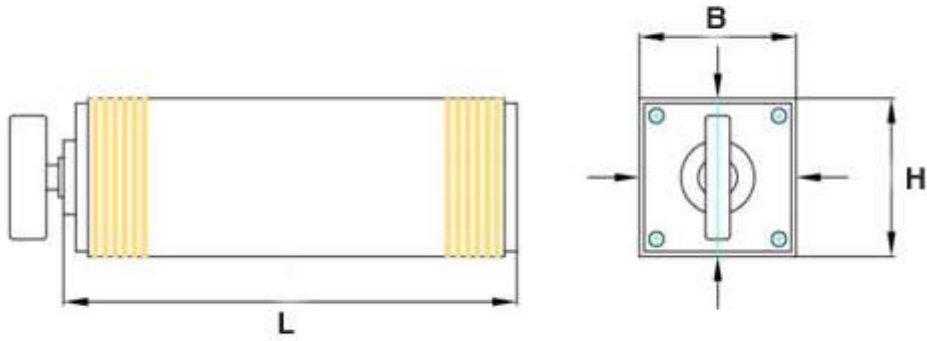
## Web

See below for more details and accessories

<https://produkte.spreitzer.de/en/clamping/magnetic-clamping-technology/permanent-magnetic-blocks/permanent-magnetic-clamping-block-sp-pmb-681>.

Finish	Order Number	L [mm]	B [mm]	H [mm]	Clamping areas	Finish	Pole pitch [mm]	Holding force [N]	Holding force [N/cm²]	Weight [kg]
SP-PMB	B900500771	175	64	64	4x 115x64 (mm)	square	2+2	/	80	3,2
SP-PMB-L	B900500772	195	64	64	4x 135x64 (mm)	square	2+2	/	80	3,8
SP-PMB-X	B900500773	175	64	64	4x 175x64 (mm)	square	2+2	/	50	3,2
SP-PMB-LX	B900500774	195	64	64	4x 115x64 (mm)	square	2+2	/	50	3,5

**Note:** Your selected variants are marked in orange.



Dimensions permanent magnetic clamping block SP-PMB