

Electric drive for precision rotary units PDE micro and PDE



The electric drive for the precision rotary unit PDE allows a precise and smoothly movement down to speed 0 at full torque. The absolute encoder serves as actual value transmitter for the positioning of the workpieces under the optic. The positioning increments can be preselected by using the control dial or TFT display.



Scope of delivery

- 1 DC motor with pulse generator and control transformer
- 1 TFT display with USB interface

Strong Points

- + Precise, smoothly movement
- + Index drive with digital display

Note

- more precise version on request

Web

See below for more details and accessories

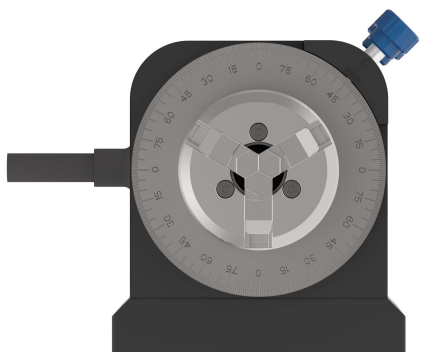
<https://produkte.spreitzer.de/en/testing/electric-drive-for-precision-rotary-units/electric-drive-for-precision-rotary-units-pde-micro-and-pde-566>.

Finish

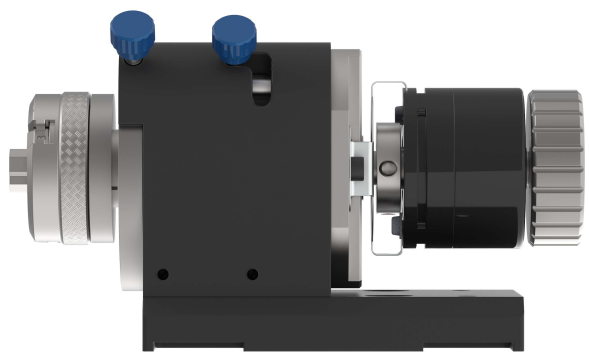
- Smallest increment 0.1 degrees*

Accessories available on request:

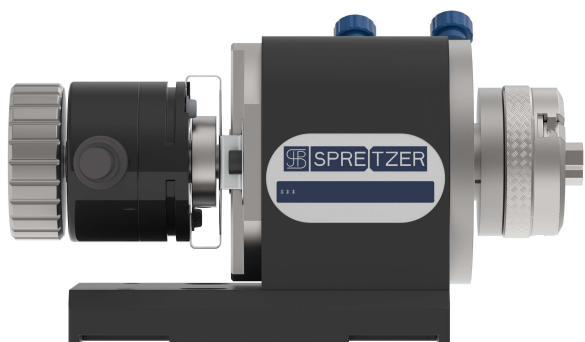
- Control and operation via Android app
- Interface for machine controller



Electric drive for the precision rotary units PDE / PDE micro Front view



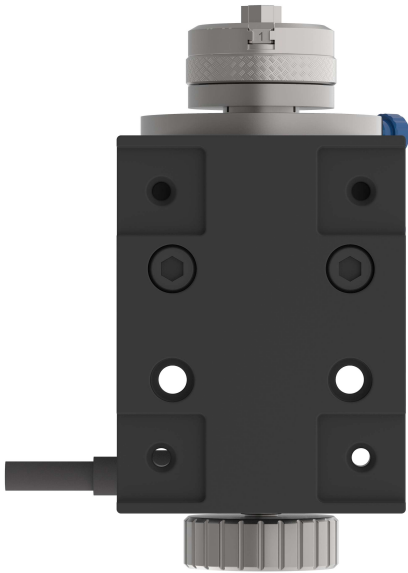
Electric drive for the precision rotary units PDE / PDE micro from the right



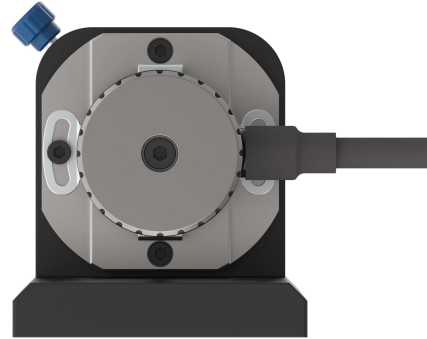
Electric drive for the PDE / PDE micro precision rotary units from the left



Electric drive for the PDE / PDE micro precision rotary units from above



Electric drive for the PDE / PDE micro precision rotary units from below



Electric drive for the precision rotary units PDE / PDE micro rear view

Note: Your selected variants are marked in orange.