

This indexing unit is specially designed for use on wire-EDM machines provided. Through the mounting holes mounting on hole pattern 40 mm and 50 mm by M8 screws is possible. Indexing via indexing plate with 72 positions, the interim indexing positions by 360° scale and nonius.



Scope of delivery

- 1 Indexing unit with operating instructions

Web

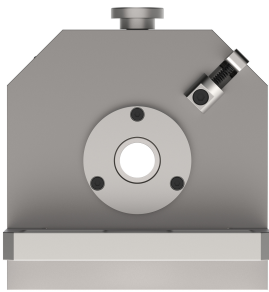
See below for more details and accessories
<https://produkte.spreitzer.de/en/clamping/precision-workholding-for-toolmaking/indexing-units/indexing-unit-va-with-face-plate-522>.

Material
<ul style="list-style-type: none">• Magnetizable chrome steel• Rust-resistant
Accuracy
<ul style="list-style-type: none">• Square-accuracy 0,005 mm• Parallel-accuracy 0,003 mm• Concentricity 0.01mm• Indexing precision $\pm 2'$

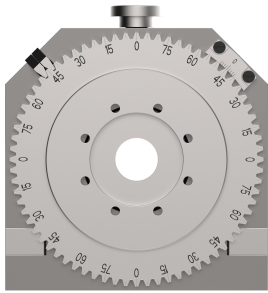
Finish
<ul style="list-style-type: none">• Completely hardened• Completely precision grinded• Fully sealed precision rolling bearings
Operation
<ul style="list-style-type: none">• Mechanically



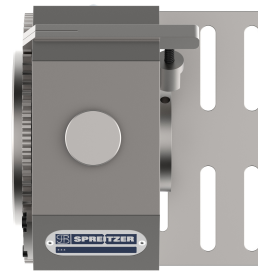
Direct dividing attachment with faceplate, front view



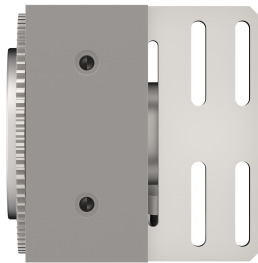
Direct dividing head with faceplate from the right



Direct dividing head with face plate from the left



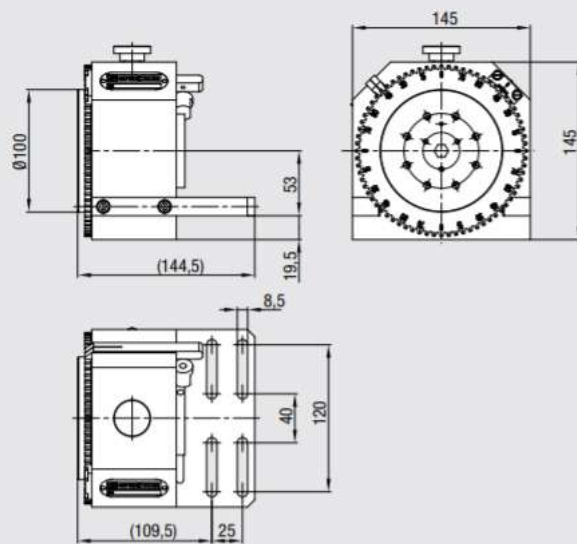
Direct dividing head with face plate from above



Direct dividing head with face plate from below

Finish	Order Number
TA VA / PS	B609800015

Note: Your selected variants are marked in orange.



CAD
Files
Available

Plan drawing of direct dividing head with face plate

Special features



Dividing attachment with System 3R Macro chuck