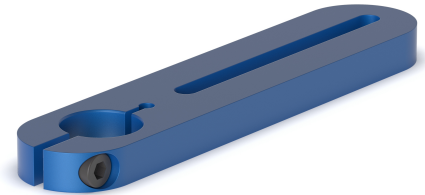


Using the supporting rail, the supporting elements can be placed in three axial directions. The supporting rail can be steplessly moved and fixed on the stud bolt and receiver M10×1 with Ø20 mm.



Scope of delivery

Web

See below for more details and accessories

<https://produkte.spreitzer.de/en/clamping/alumess-fixturing-systems/alumess.junior/alumess.junior-supporting-and-positioning-elements/supporting-rail-348>.



ALUMESS.junior/ALUMESS.maxx carrier strip, front view



ALUMESS.junior/ALUMESS.maxx carrier strip from the right



ALUMESS.junior/ALUMESS.maxx carrier strip from the left



ALUMESS.junior/ALUMESS.maxx carrier bar from above



ALUMESS.junior/ALUMESS.maxx carrier strip from below

Finish	Order Number	L [mm]	B [mm]	H [mm]	Ø [mm]	Slot [mm]
Supporting rail	B501500060	140	30	10	20,2	6,2

Note: Your selected variants are marked in orange.

Anwendungen

