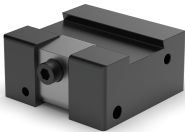


The raw part clamping units RS provide maximum accessibility with maximum holding power in the 5- and multi-sided machining of workpieces on multi-axis machining centers. The compact design of the raw part clamping units offer key advantages especially when mounted on automation pallets. Through the undercut at fixed and clamping jaws, the workpiece is held securely during machining. Only 3 – 5 mm clamping depth are necessary. For axial positioning of workpieces on the raw part clamp an additional slot nut is available.



## Fields of application areas

- Single part / and small series production
- Mass production
- Clamping from outside to inside (external clamping)

## Scope of delivery

- 1 Raw part clamping unit RS with operating instructions

## Accessories

- General accessories

## Note

- Form cutters to prepare your work pieces are available on request.



## Web

See below for more details and accessories  
<https://produkte.spreitzer.de/en/clamping/compact-vises-stationary-workholding/mechanical-double-vises-and-compact-vises/raw-part-clamping-unit-rs-220>.

Material
<ul style="list-style-type: none"><li>• Steel</li></ul>

Accuracy
<ul style="list-style-type: none"><li>• Pairing accuracy 0,02 mm</li></ul>

Strong Points
<ul style="list-style-type: none"><li>+ Maximum access</li><li>+ Maximum holding power</li><li>+ Powerful and economical</li></ul>

Main application
<div> Blank Clamping</div> <div> Pallet Automation</div>

Finish
<ul style="list-style-type: none"><li>• Surface hardened</li><li>• Black-finished</li></ul>

Work steps
<ul style="list-style-type: none"><li>• 1. Sawing raw material</li><li>• 2. Machining dovetail contour</li><li>• 3. Clamp raw material</li></ul>



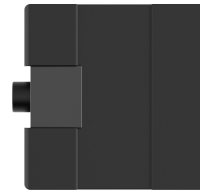
Blank clamp RS 60 front view



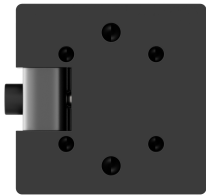
Raw part clamp RS 60 from the left



Raw part clamp RS 60 from the right



Blank clamp RS 60 from above

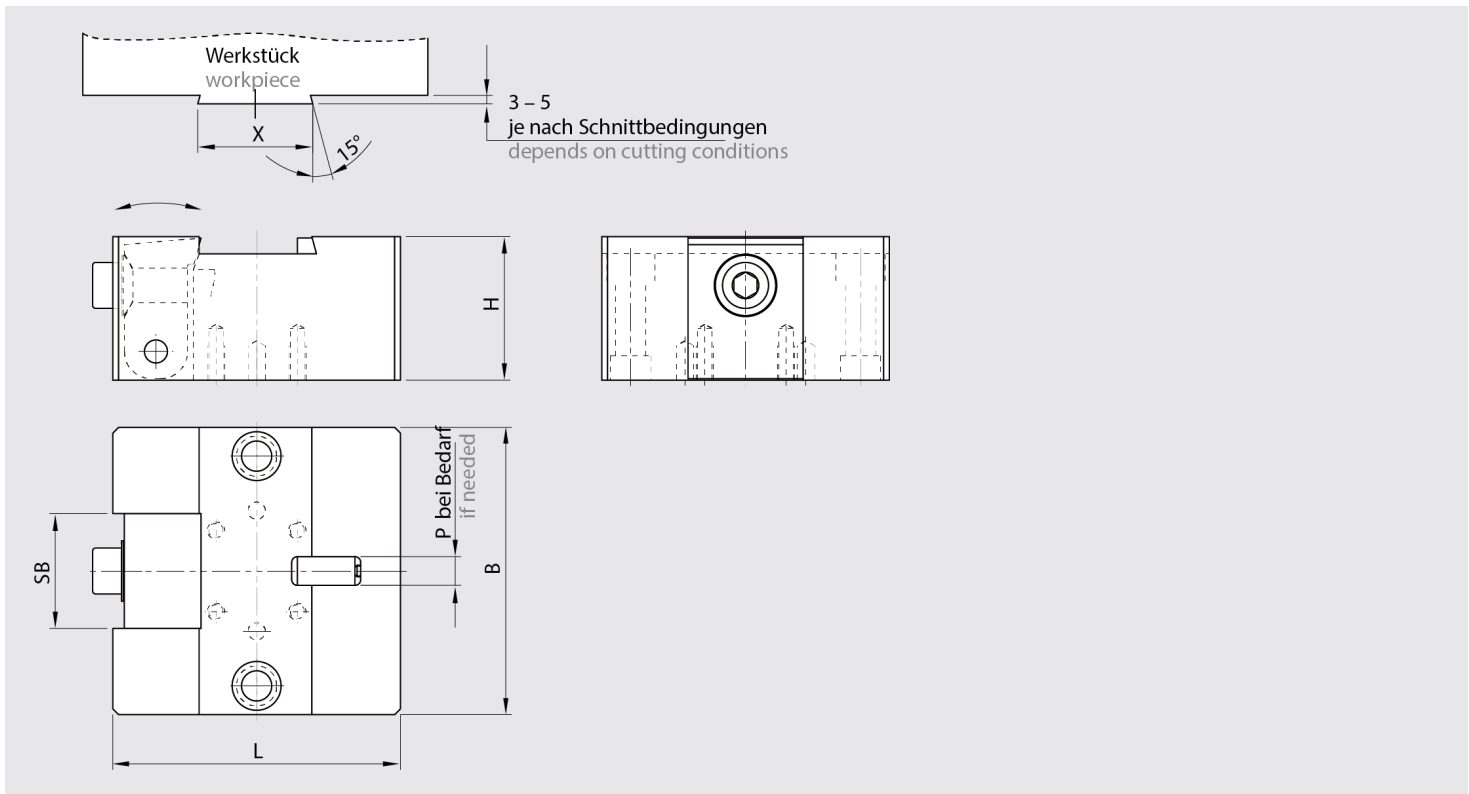


Raw part clamp RS 60 from below



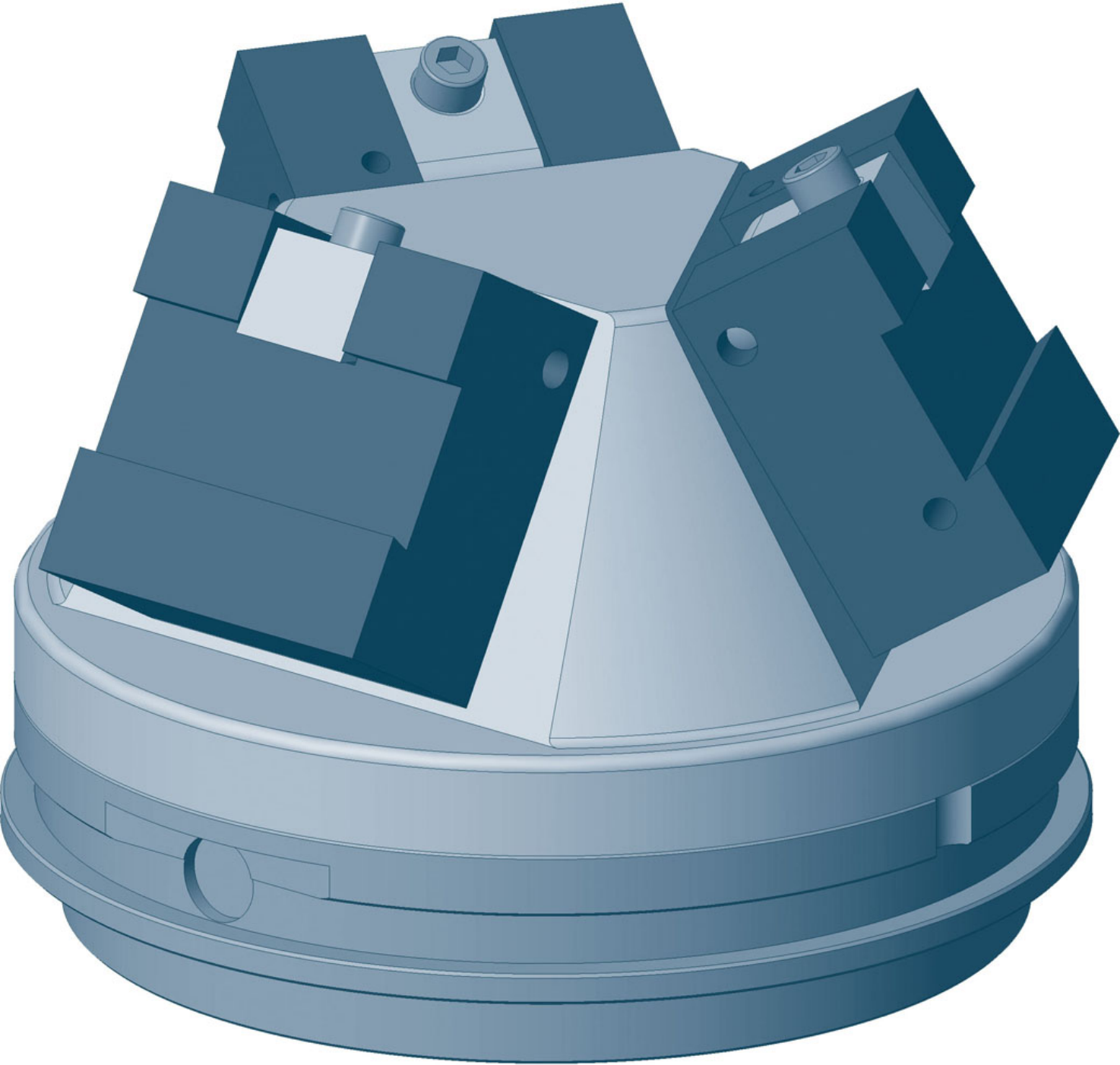
Finish	Order Number	L [mm]	B [mm]	H [mm]	SB [mm]	X [mm]	SW [mm]	M max [Nm]	Weight [kg]
RS 60	B202500001	60	60	40	25	25	8	10	0,9
RS 100	B202500002	100	100	50	40	40	8	49	3,5

Note: Your selected variants are marked in orange.

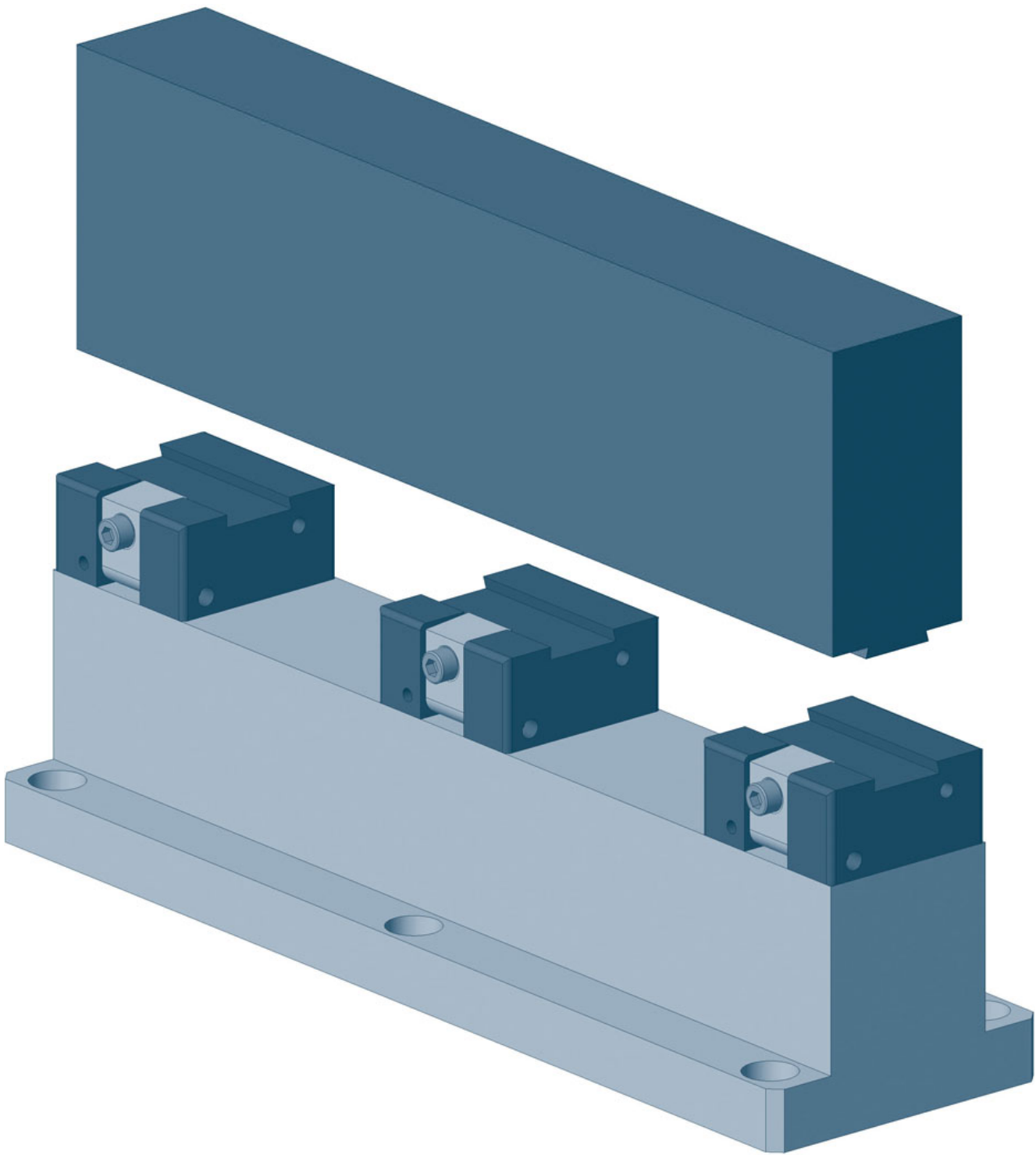


Plan drawing of blank clamp RS

Special features



Three RS blank clamps on a pyramid



Three blank clamps RS in a row